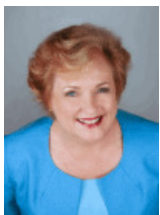




Personality Characteristics
(list of adjectives)
(from page 92 of the book)

Pick at least fifteen words that you think describe your personality. Work quickly, giving yourself about five minutes. You can add words at the bottom if you want.

- | | | | |
|-----------------|---------------|---------------|---------------|
| practical | idealistic | stable | reliable |
| introspective | leader | temperamental | loner |
| playful | imaginative | courageous | curious |
| nurturing | indecisive | helpful | sensitive |
| friendly | consistent | responsible | calm |
| excitable | trusting | jealous | trustworthy |
| ambitious | mischievous | creative | obstinate |
| energetic | enthusiastic | emotional | independent |
| fearful | rigid | intelligent | follower |
| procrastinator | organized | perceptive | worrier |
| conscientious | sensitive | clever | quiet |
| talkative | kind | restrained | anxious |
| serious | aggressive | open-minded | optimistic |
| impatient | articulate | poised | confident |
| dependable | fun-loving | patient | compassionate |
| conservative | outgoing | sincere | loyal |
| spontaneous | deliberate | decisive | opinionated |
| action-oriented | goal-oriented | analytical | expressive |
| listener | unreliable | pessimistic | genuine |



Betsy Smith
 PhD, Certified Life/Business Coach, ACC
 850-384-4874
bsmith@shiftchangeoaching.com



Kathleen Vestal Logan
 850- 934-8056
kvllifeskills@aol.com